

NAIL DRILL MACHINE ALLESTRONG 270 MOLLY NAILS

Model: ALLESTRONG 270

Certificate No.: LCS200624094AE LCS200624095AS001



TECHNICAL DATA:

Power: 65W

Nominal input: 220V 50 Hz

Nominal output: 0-32V

Rotation speed: 35000 RPM

1. SAFETY OF USE:

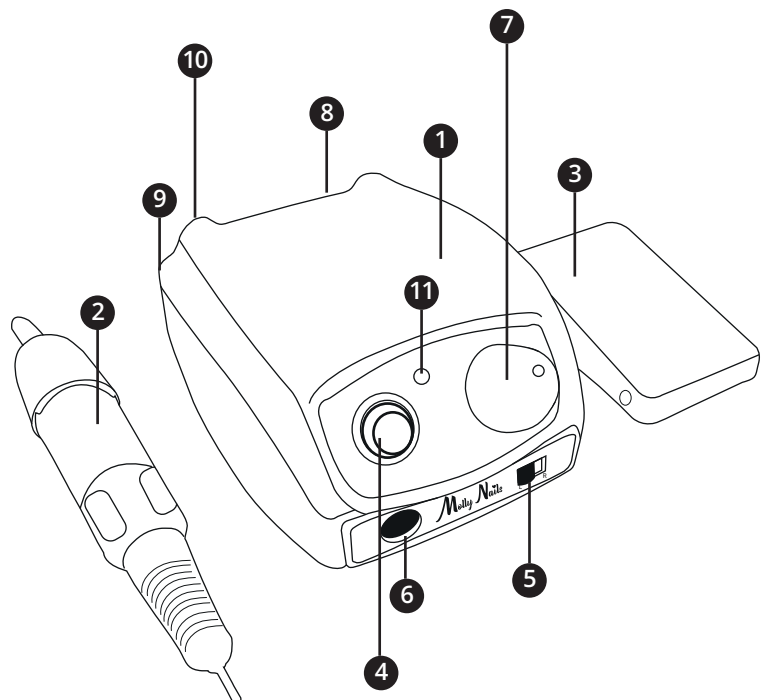
1. Before use, read the user manual carefully.
2. Remember that the actual voltage used must correspond to the nail drill's parameters.
3. Do not use the device in a damp/wet area or when the air humidity level reaches high values.
4. If the nail drill machine is flooded, immediately disconnect it from the power source. A flooded device must not be used again. Return it to the manufacturer's service for inspection and possible repair.
5. Disconnect the power plug when the nail drill machine is not used for a long time.
6. Wipe with a mild detergent if the surface is dirty. Perform the operation with the equipment switched off (disconnect the power cable). Never clean with an acidic cleaning agent
7. Do not place the nail drilling machine near heating devices, candles, open fire or cigarettes.
8. The nail drilling machine has an automatic switch that protects the motor from damage. It starts when the motor loads are too high. Only work within the permissible load range of the nail drilling machine.
9. Do not open the nail drill bit handle while the nail drilling machine is on! Before changing the nail drill bit, turn off the power to the device.
10. Do not allow the handle to drop or damage. In case of malfunction, do not use the device and contact the manufacturer or service.
11. Change the rotation speed of the controller gradually.
12. Rational use and proper maintenance can extend the life of the nail drill machine.
13. If the device does not work properly, ask a specialist to check the lower fuse for damage.
14. **Keep away from children.**

2. THE SET INCLUDES:

- Nail drill machine
- Handle
- Foot drive
- User manual
- Handle holder
- Power cable

3. FUNCTION BUTTON CHARACTERIZATION:

1. Control box
2. Handle
3. Foot drive (ON/OFF)
4. Power button
5. Rotation direction change button
6. Head connector
7. Speed control knob
8. Foot drive connector
9. power connector
10. Fuse socket
11. Operation indicator light



4. MAIN FUNCTIONS:

The nail drill machine was designed with professional manicure salons in mind, as well as users who do manicures at home. The user-friendly design and handpiece designed to give a sense of high comfort of work are the distinctive features of the device.

5. HOW TO USE:

1. Connect the power cord to the appropriate input on the device.
2. Connect the handle to the appropriate input on the device.
3. Set the rotation speed knob to „0”.
4. Turn the device on with the ON/OFF button.
5. Turn the knob to set the optimal revolutions for work. The right turn increases the speed, turning to the left slows it down.
6. Switch the rotation button to the right/left depending on the need for work.
7. Turn off the power and connect the pedal to the control unit. Check his work. .
8. If you are not using the milling machine, remember to always unplug the power cable from the socket.

6. ASSEMBLY AND REPLACEMENT OF NAIL DRILL BITS:

1. Turn the handle in the opening direction to open it.
2. Once the handle is open, insert the nail drill bit into it all the way.
3. Turn the handle in the closing direction until you hear a click.

7. DIRECTIONS:

1. Keep your workplace clean from dust and particles.
2. Remove dust from the head regularly with isopropyl alcohol, avoiding soaking the interior avoiding wetting the inside
3. of the handle nail drill machine.
4. Do not apply oil to parts of the handle, or clean it with water. The grease in the bearings can melt through the oil.
5. If the device is not used for a long time, disconnect the power plug and store the device in a ventilated, dry place.



In accordance with art. 13 sec. 1 of the Act of 11 September 2015 on used electrical and electronic equipment (Journal of Laws 2015 item 1688), we inform you about the correct handling of waste electrical and electronic equipment:

1. It is prohibited to place used electrical and electronic equipment together with other waste - this is confirmed by the marking in the form of a "crossed-out bin", which requires selective collection of this type of waste.
2. Electrical and electronic devices may contain hazardous substances, mixtures and components, which, after entering the environment, may pose a serious threat to the health and life of humans and living organisms.
3. Used electrical and electronic equipment should be transferred only to authorized collection points, the list of which should be included on the website of each Municipal Office.
4. Households play a key role in the waste management system for used electrical and electronic equipment due to the possibility of their direct transfer to authorized collection points and the elimination of undesirable social habits resulting in leaving waste equipment in places not intended for this purpose.

IMPORTER
Molly Lac
Michał Szewczyk
Piotrkowska 270
90-361 Łódź, Polska
uwagi@mollylac.com
www.mollylac.com

Made in PRC